

Phospho-c-SRC (Tyr419) Polyclonal Antibody

Cat# A340295– 20/60/120/200 ul

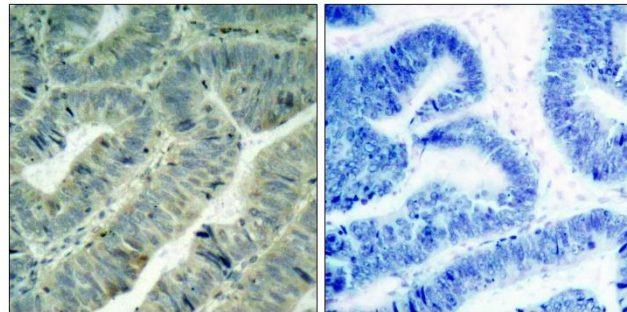
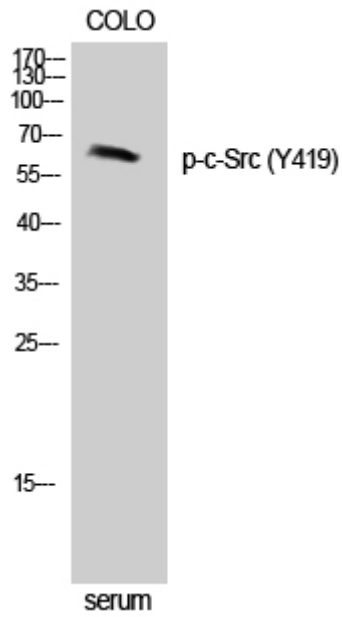
Storage at -20 °C

INFORMATION

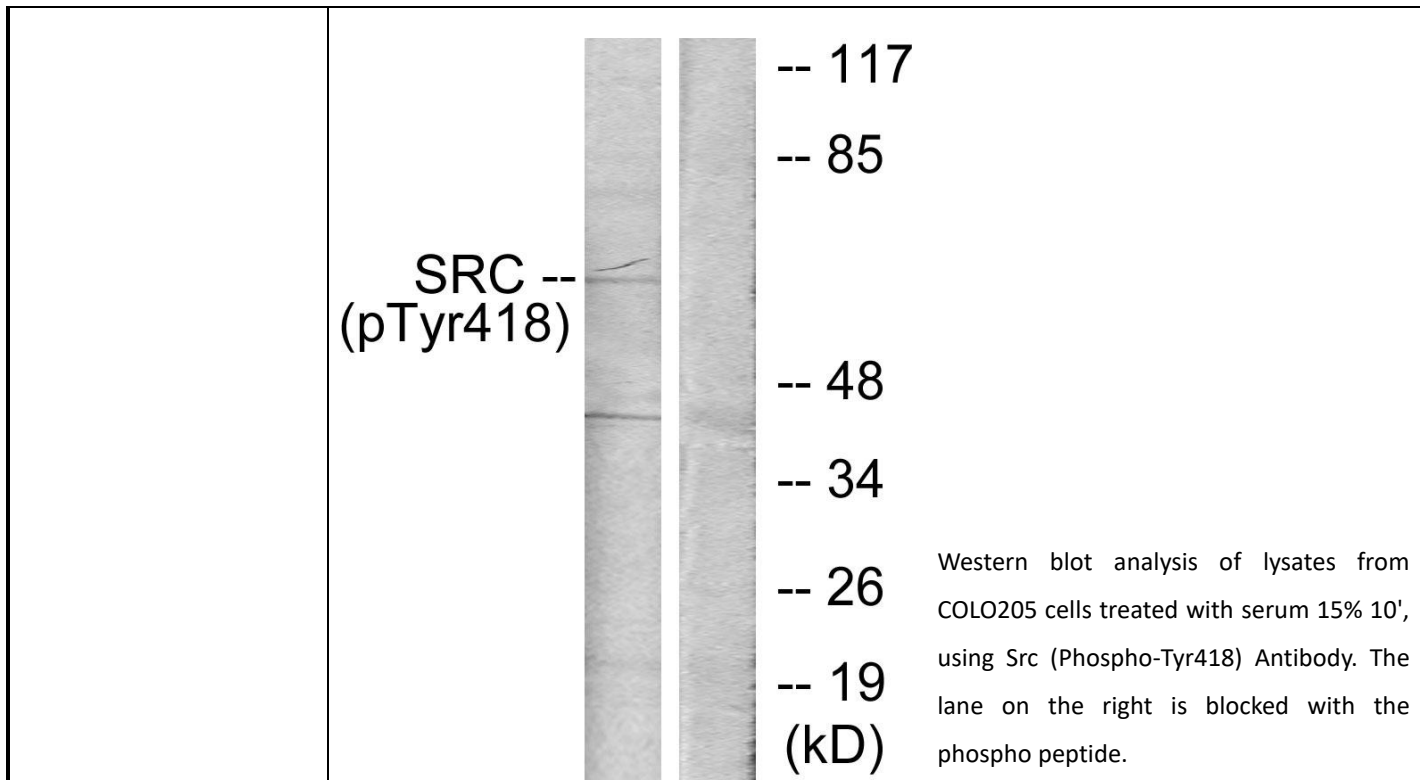
Product Name	Phospho-c-SRC (Tyr419) Polyclonal Antibody
Cat. No.	A340295
Product type	Primary antibodies
Species reactivity	Human, Mouse, Rat
Clonality	polyclonal
Host	Rabbit
Size	20 ul/ 60 ul/ 120 ul/ 200 ul
Uniprot	Human: P12931, Mouse: P05480, Rat: Q9WUD9
Immunogen	The antiserum was produced against synthesized peptide derived from human Src around the phosphorylation site of Tyr418. AA range:386-435
Concentration	1 mg/ml
Tested applications	WB, IHC-p, IF, ELISA
Application	WB : 1:500-1:2000/IHC-p : 1:100-1:300/ ELISA : 1:20000. Not yet tested in other applications.
Conjugation	None
Purification	The antibody was affinity-purified from rabbit antiserum by affinity-chromatography using epitope-specific immunogen.
Molecular Weight	59704
Observed Band	60 kDa
Stock buffer	PBS with 0.02% sodium azide, 0.5% BSA and 50% glycerol, pH7.3
Storage instruction	Store at -20°C. Avoid freeze / thaw cycles.
Cell pathway	ErbB_HER, Endocytosis, VEGF, Focal adhesion, Adherens_Junction, Adherens_Junction, Gap junction, GnRH, Epithelial cell signaling in Helicobacter pylori infection.
Subcellular location	nucleus, cytoplasm, mitochondrion, mitochondrial inner membrane, lysosome, late endosome, cytosol, actin filament, plasma membrane, caveola, cell-cell adherens junction, postsynaptic density, extrinsic com
Expression	Lung, Platelet, Skin,

Alias	ASV, Avian sarcoma virus, cSRC, CDNA FLJ14219 fis clone NT2RP3003800 highly similar to Rattus norvegicus tyrosine protein kinase pp60 c src mRNA, cSrc, EC 2.7.10.2, Neuronal CSRC tyrosine specific protein kinase, Neuronal SRC, Oncogene SRC, OTTHUMP00000174476, OTTHUMP00000174477, p60 Src, p60-Src, p60Src, pp60c src, pp60c-src, pp60csrc, Proto oncogene tyrosine protein kinase Src, Proto-oncogene, c-Src, Proto-oncogene tyrosine-protein kinase Src, Protooncogene SRC, Protooncogene SRC Rous sarcoma, Src, SRC Oncogene, SRC proto oncogene non receptor tyrosine kinase, SRC, SRC1, Tyrosine kinase pp60c src, Tyrosine protein kinase SRC 1, Tyrosine protein kinase SRC1, v src avian sarcoma (Schmidt Rupp A2) viral oncogene homolog, V src sarcoma (Schmidt Rupp A 2) viral oncogene homolog (avian), v src sarcoma (Schmidt Rupp A 2) viral oncogene homolog avian
Background	SRC proto-oncogene, non-receptor tyrosine kinase (SRC) Homo sapiens This gene is highly similar to the v-src gene of Rous sarcoma virus. This protooncogene may play a role in the regulation of embryonic development and cell growth. The protein encoded by this gene is a tyrosine-protein kinase whose activity can be inhibited by phosphorylation by c-SRC kinase. Mutations in this gene could be involved in the malignant progression of colon cancer. Two transcript variants encoding the same protein have been found for this gene. [provided by RefSeq, Jul 2008].
Function	catalytic activity: ATP + a [protein]-L-tyrosine = ADP + a [protein]-L-tyrosine phosphate, PTM: Phosphorylated on Tyr-530 by c-Src kinase (CSK). The phosphorylated form is termed pp60c-src. The phosphorylated tail interacts with the SH2 domain thereby repressing kinase activity, similarity: Belongs to the protein kinase superfamily. Tyr protein kinase family. SRC subfamily, similarity: Contains 1 protein kinase domain, similarity: Contains 1 SH2 domain, similarity: Contains 1 SH3 domain, subunit: Interacts with DDEF1/ASAP1; via the SH3 domain. Interacts with CCPG1 (By similarity). Interacts with CDCP1, PELP1, TGFB1I1 and TOM1L2. Interacts with the cytoplasmic domain of MUC1, phosphorylates it and increases binding of MUC1 with beta-catenin. Interacts with RALGPS1; via the SH3 domain. Interacts with HEV ORF3 protein; via the SH3 domain.

Image



Immunohistochemistry analysis of paraffin-embedded human colon carcinoma, using Src (Phospho-Tyr418) Antibody. The picture on the right is blocked with the phospho peptide.



PRODUCT USE LIMITATION

These products are intended for research use only.