

# iNOS/NOS2 Polyclonal Antibody

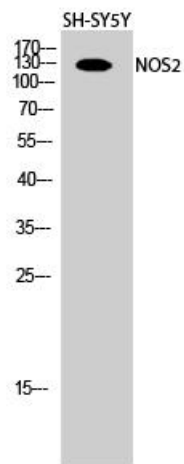
Cat# A20241PI

Upon receipt, store at -20°C . Avoid repeated freeze.

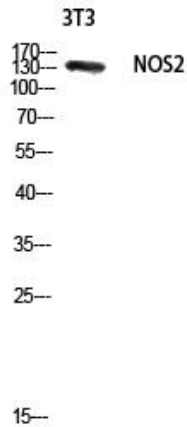
## INFORMATION

<b>Product Name</b>	iNOS/NOS2 Polyclonal Antibody
<b>Cat. No.</b>	A20241PI
<b>Size</b>	20 µl ,50 µl ,100 µl
<b>Product type</b>	Primary Antibody
<b>Species Reactivity</b>	Hu, Ms, Rt
<b>Immunogen</b>	The antiserum was produced against synthesized peptide derived from human iNOS. AA range:117-166
<b>Target</b>	NOS2 Polyclonal Antibody detects endogenous levels of NOS2 protein.
<b>Host</b>	Rabbit
<b>Clonality</b>	Polyclonal
<b>Tested applications</b>	IF: 1:50-200 WB 1:500-2000, ELISA 1:10000-20000 IHC 1:50-300
<b>Conjugation</b>	Non-Conjugated
<b>Purification Method</b>	The antibody was affinity-purified from rabbit antiserum by affinity-chromatography using epitope-specific immunogen.
<b>Concentration</b>	1 mg/mL
<b>Storage buffer</b>	1 mg/ml, liquid in 0.01M Phosphate Buffered Saline, pH 7.2, containing 1% BSA, 50% glycerol, 0.02% Sodium Azide
<b>Alias</b>	NOS2; NOS2A; Nitric oxide synthase; inducible; Hepatocyte NOS; HEP-NOS; Inducible NO synthase; Inducible NOS; iNOS; NOS type II; Peptidyl-cysteine S-nitrosylase NOS2

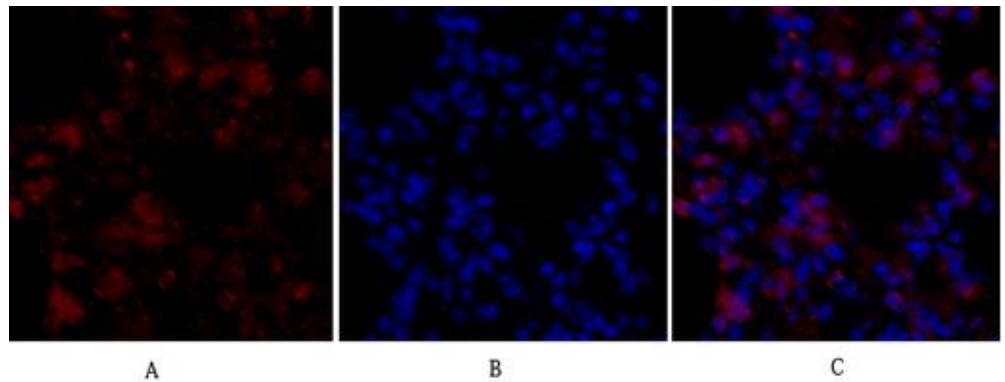
Image



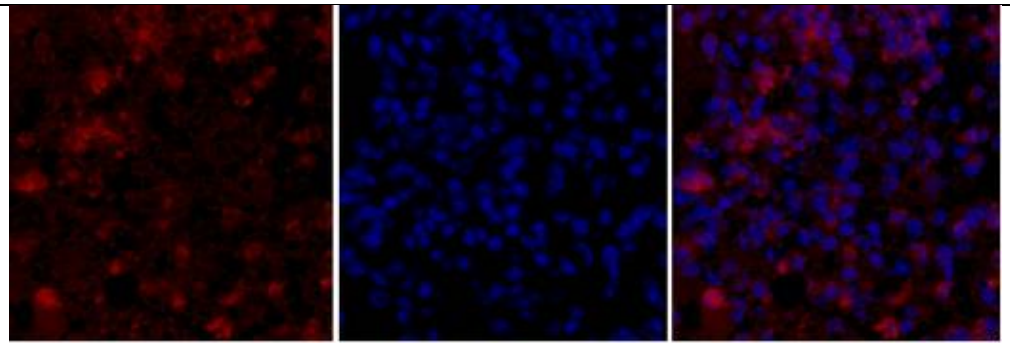
Western Blot analysis of SH-SY5Y cells using NOS2 Polyclonal Antibody diluted at 1 : 500



Western blot analysis of 3T3 lysis using NOS2 antibody. Antibody was diluted at 1:500



Immunofluorescence analysis of mouse-lung tissue. 1, NOS2 Polyclonal Antibody (red) was diluted at 1:200 (4°C, overnight). 2, Cy3 labeled Secondary antibody was diluted at 1:300 (room temperature, 50min). 3, Picture B: DAPI (blue) 10min. Picture A: Target. Picture B: DAPI. Picture C: merge of A+B

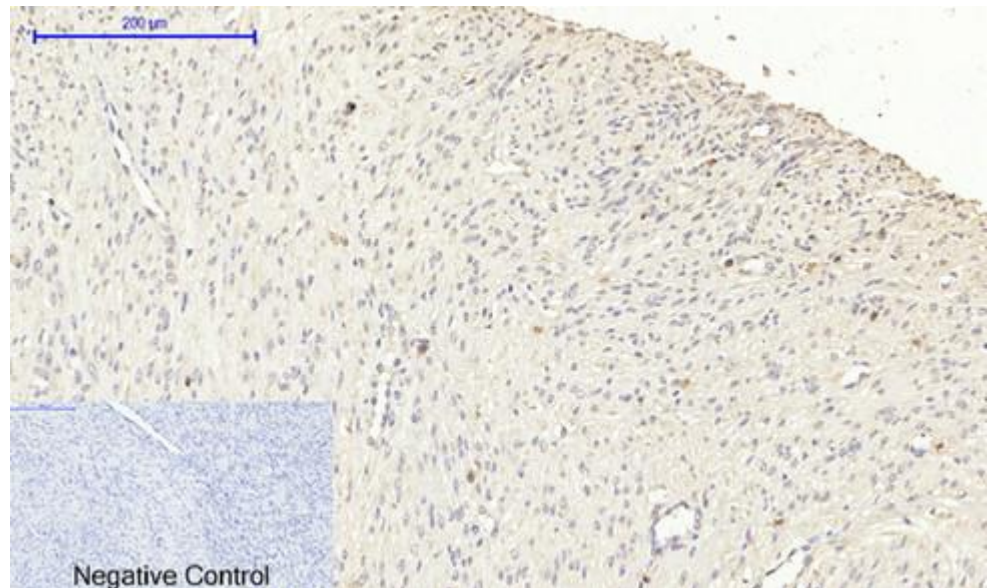


A

B

C

Immunofluorescence analysis of mouse-lung tissue. 1, NOS2 Polyclonal Antibody (red) was diluted at 1:200 (4°C, overnight). 2, Cy3 labeled Secondary antibody was diluted at 1:300 (room temperature, 50 min). 3, Picture B: DAPI (blue) 10 min. Picture A: Target. Picture C: merge of A+B



Immunohistochemical analysis of paraffin-embedded Human-uterus-cancer tissue. 1, NOS2 Polyclonal Antibody was diluted at 1:200 (4°C, overnight). 2, Sodium citrate pH 6.0 was used for antibody retrieval (>98°C, 20 min). 3, Secondary antibody was diluted at 1:200 (room temperature, 30 min). Negative control was used by secondary antibody only.

## **PRODUCT USE LIMITATION**

These products are intended for research use only.