



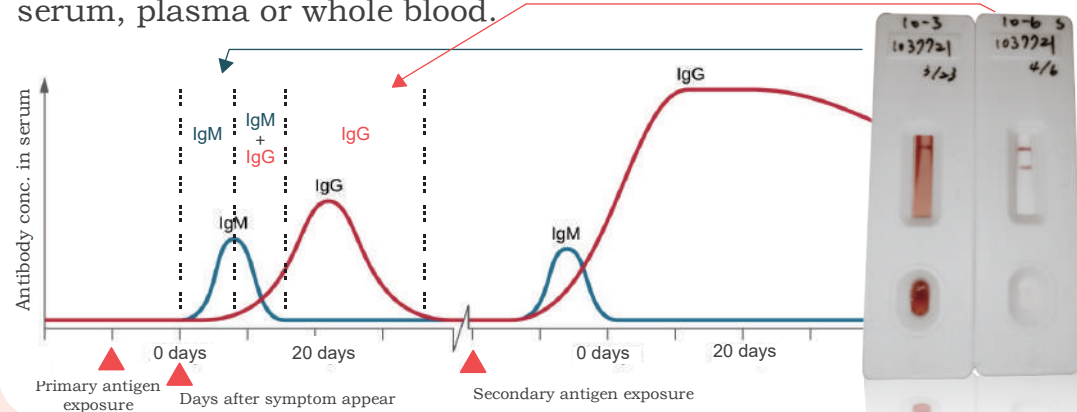
COVID-19

IgG / IgM Dual Detection Kit

The number of cases of COVID-19 virus (SARS-CoV-2) infection is rapidly increasing. ACE Biolabs provides a large-scale and reliable diagnostic method for COVID-19: IgG/IgM antibody rapid screening reagents.

Introduction

In the early stages of virus infection, IgM provides the first line of immune defense in the body. During infection, IgG provides a long-term immune. The detection of the IgM antibody against to COVID-19 (SARS-CoV-2) virus represents that the subject is recently exposed to the COVID-19 virus, and the detection of the IgG antibody against to COVID-19 virus represents the middle and late stages of infection. Therefore, this detection kit is an effective method for rapid diagnosis of COVID-19 and provides information about the infection stage by detecting IgM and IgG in human serum, plasma or whole blood.

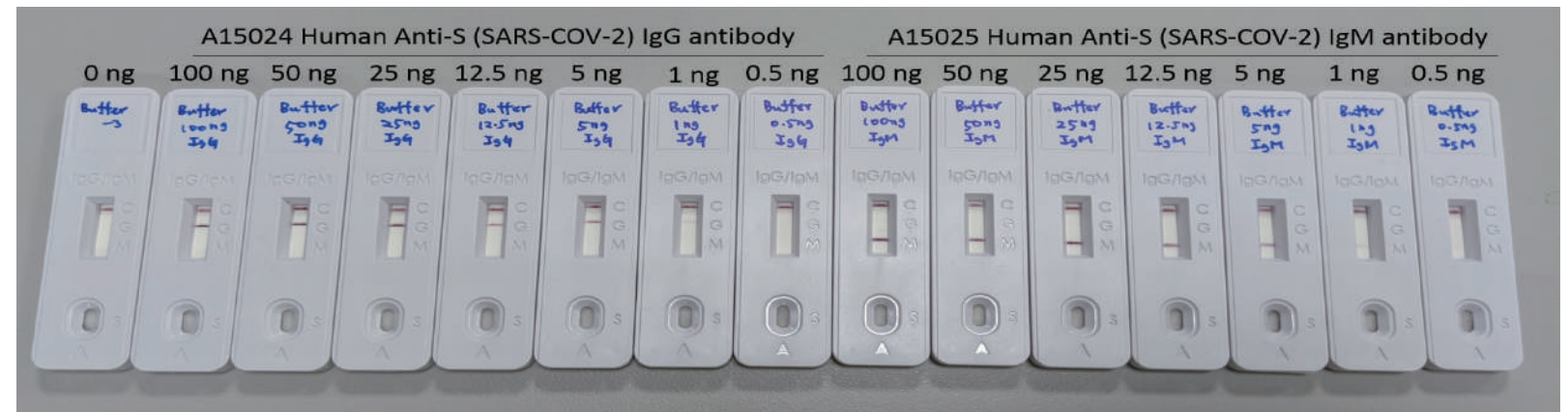


Specification

Cat. No.	Product Description	Specification
COV1001	COVID-19 IgG / IgM Dual Detection Kit	50 Tests/Box

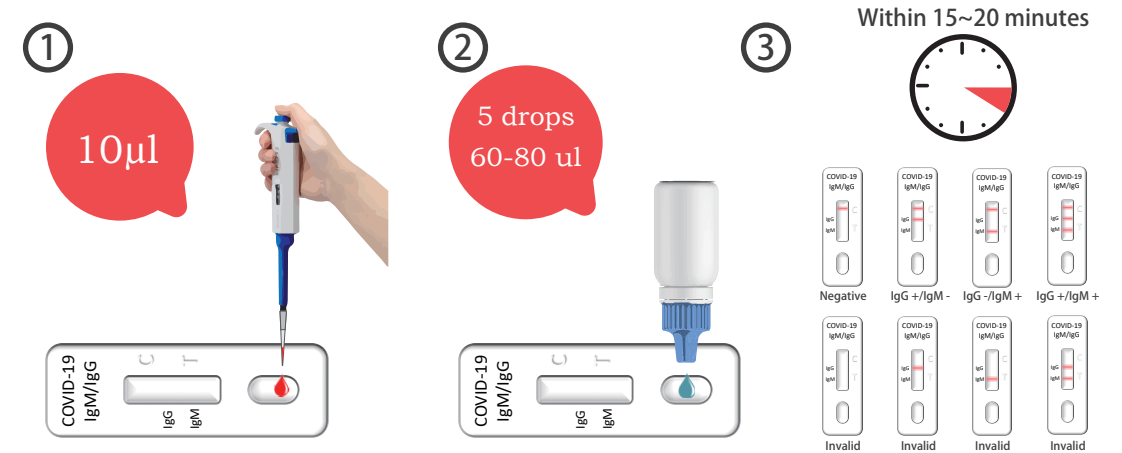
High Sensitivity

Sensitivity reach 1 ng specific to COVID-19 IgG or IgM



Easy to Use

- If the reagent is stored in a refrigerator at 2-8° C, remove the reagent card and equilibrate at room temperature for more than 30 minutes.
- Open the inspection card aluminum foil bag. Remove the test card and place it horizontally on a table.
- Use pipette to aspirate sample (serum, plasma or whole blood) and **add 10 μ l to the sample hole** of the test card, and then add **4-5 droplets of sample dilution solution (60~75 μ l)** immediately.
- Read the result at 15min. Results after 20 minutes are invalid.



Rapid Results

5-20 mins to get results

