



## Sox2 (Phospho Ser250/251) Rabbit pAb

Catalog#: AP1503 | Size: 30μL/50μL/100μL

### Main Information

Target	Host Species	Reactivity	Application	MW	Conjugated/Modification
SOX-2	Rabbit	Human, Mouse	WB, IHC	35kD (Observed)	Phospho

### Detailed Information

Recommended Dilution Ratio	WB 1:500-2000; IHC 1:50-300
Formulation	Liquid in PBS containing 50% glycerol, 0.5% BSA and 0.02% sodium azide.
Specificity	This antibody detects endogenous levels of SOX-2 only when phosphorylated at Ser250/Ser251, and dually phosphorylated at two sites.
Purification	The antibody was affinity-purified from rabbit serum by affinity-chromatography using specific immunogen.
Storage	-15°C to -25°C/1 year (Do not lower than -25°C)
Concentration	1 mg/ml
MW(Observed)	35kD
Modification	Phospho
Clonality	Polyclonal
Isotype	IgG

### Antigen&Target Information

Immunogen	Synthesized phospho peptide around human Sox2 (Ser250 and Ser251)
Specificity	This antibody detects endogenous levels of SOX-2 only when phosphorylated at Ser250/Ser251, and dually phosphorylated at two sites.
Gene Name	SOX2
Protein Name	Sox2 (Ser250/Ser251)
Other Name	Transcription factor SOX-2



## Database Link

Organism	Gene ID	SwissProt
Human	6657	P48431
Mouse	20674	P48432

## Background

SRY-box 2(SOX2) Homo sapiens This intronless gene encodes a member of the SRY-related HMG-box (SOX) family of transcription factors involved in the regulation of embryonic development and in the determination of cell fate. The product of this gene is required for stem-cell maintenance in the central nervous system, and also regulates gene expression in the stomach. Mutations in this gene have been associated with optic nerve hypoplasia and with syndromic microphthalmia, a severe form of structural eye malformation. This gene lies within an intron of another gene called SOX2 overlapping transcript (SOX2OT). [provided by RefSeq, Jul 2008].

## Function

Disease:Defects in SOX2 are the cause of microphthalmia syndromic type 3 (MCOPS3) [MIM:206900]. Microphthalmia is a clinically heterogeneous disorder of eye formation, ranging from small size of a single eye to complete bilateral absence of ocular tissues (anophthalmia). In many cases, microphthalmia/anophthalmia occurs in association with syndromes that include non-ocular abnormalities. MCOPS3 is characterized by the rare association of malformations including uni- or bilateral anophthalmia or microphthalmia, and esophageal atresia with trachoesophageal fistula.,Function:Transcription factor that forms a trimeric complex with OCT4 on DNA and controls the expression of a number of genes involved in embryonic development such as YES1, FGF4, UTF1 and ZFP206. Critical for early embryogenesis and for embryonic stem cell pluripotency.,online information:Sox2 entry,PTM:Sumoylation inhibits binding on DNA and negatively regulates the FGF4 transactivation.,similarity:Contains 1 HMG box DNA-binding domain.

## Cellular Localization

Nucleus speckle . Cytoplasm . Nucleus . Acetylation contributes to its nuclear localization and deacetylation by HDAC3 induces a cytoplasmic delocalization (By similarity). Colocalizes in the nucleus with ZNF208 isoform KRAB-O and tyrosine hydroxylase (TH) (By similarity). Colocalizes with SOX6 in speckles. Colocalizes with CAML in the nucleus (By similarity). Nuclear import is facilitated by XPO4, a protein that usually acts as a nuclear export signal receptor (By similarity).

## Tissue Expression

Fetal brain,Lung,Retina.

## Research Areas

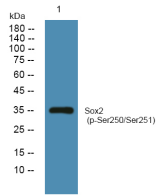
- Hippo signaling pathway
- Signaling pathways regulating pluripotency of stem cells

## Signaling Pathway

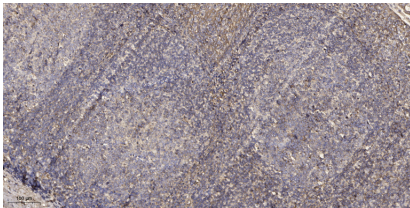
Cellular Processes >> Cellular community - eukaryotes >> Signaling pathways regulating pluripotency of stem cells  
Environmental Information Processing >> Signal transduction >> Hippo signaling pathway



## Validation Data



Western blot analysis of lysates from SH-SY5Y cells, primary antibody was diluted at 1:1000, 4°over night



Immunohistochemical analysis of paraffin-embedded human tonsil. 1, Antibody was diluted at 1:200(4° overnight). 2, Tris-EDTA,pH9.0 was used for antigen retrieval. 3,Secondary antibody was diluted at 1:200(room temperature, 45min).

## Contact Information

☎ +886-32876194    🌐 [www.acebiolab.com](http://www.acebiolab.com)    ✉ Order: [order@acebiolab.com](mailto:order@acebiolab.com)    ✉ Support: [service@acebiolab.com](mailto:service@acebiolab.com)  
📍 RM. 7, 13F., NO. 268, SEC. 1, GAOTIEZHANQIAN W. RD., ZHONGLI DIST., TAOYUAN CITY 320016 , TAIWAN (R.O.C.)

For Research Use Only. Not for Diagnostic Purposes