



## CALCA Rabbit pAb

Catalog#: A122444 | Size: 30μL/50μL/100μL

### Main Information

Target	Host Species	Reactivity	Application	MW	Conjugated/Modification
Calcitonin	Rabbit	Human, Mouse, Rat	WB, ELISA	14kD (Observed)	Unmodified

### Detailed Information

Recommended Dilution Ratio	WB 1:500-2000; ELISA 1:5000-20000
Formulation	Liquid in PBS containing 50% glycerol, and 0.02% sodium azide.
Specificity	CALCA Polyclonal Antibody detects endogenous levels of protein.
Purification	The antibody was affinity-purified from rabbit antiserum by affinity-chromatography using epitope-specific immunogen.
Storage	-15°C to -25°C/1 year(Do not lower than -25°C)
Concentration	1 mg/ml
MW(observed)	14kD
Modification	Unmodified
Clonality	Polyclonal
Isotype	IgG

### Antigen&Target Information

Immunogen	Synthesized peptide derived from human protein . at AA range: 71-120
Specificity	CALCA Polyclonal Antibody detects endogenous levels of protein.
Gene Name	CALCA CALC1
Protein Name	Calcitonin gene-related peptide 1 (Alpha-type CGRP) (Calcitonin gene-related peptide I) (CGRP-I)



## Database Link

Organism	Gene ID	SwissProt
Human	796	P06881
Mouse		Q99JA0
Rat		P01256

## Background

CALCA encodes the peptide hormones calcitonin, calcitonin gene-related peptide and katacalcin by tissue-specific alternative RNA splicing of the gene transcripts and cleavage of inactive precursor proteins. Calcitonin is involved in calcium regulation and acts to regulate phosphorus metabolism. Calcitonin gene-related peptide functions as a vasodilator and as an antimicrobial peptide while katacalcin is a calcium-lowering peptide. Multiple transcript variants encoding different isoforms have been found for CALCA.

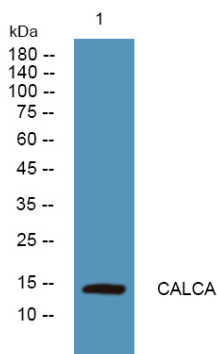
## Cellular Localization

Secreted.

## Signaling Pathway

Organismal Systems >> Circulatory system >> Vascular smooth muscle contraction

## Validation Data



Western blot analysis of lysates from U2OS cells, primary antibody was diluted at 1:1000, 4°over night

## Contact Information

+886-32876194    [www.acebiolab.com](http://www.acebiolab.com)    Order: [order@acebiolab.com](mailto:order@acebiolab.com)    Support: [service@acebiolab.com](mailto:service@acebiolab.com)  
RM. 7, 13F., NO. 268, SEC. 1, GAOTIEZHANQIAN W. RD., ZHONGLI DIST., TAOYUAN CITY 320016, TAIWAN (R.O.C.)

For Research Use Only. Not for Diagnostic Purposes.