



PACA Rabbit pAb

Catalog#: A122907 | Size: 30μL/50μL/100μL

Main Information

Target	Host Species	Reactivity	Application	MW	Conjugated/Modification
PACA	Rabbit	Human, Mouse, Rat	WB, IHC, ELISA	19kD (Observed)	Unmodified

Detailed Information

Recommended Dilution Ratio	WB 1:500-2000; IHC 1:50-300; ELISA 1:5000-20000
Formulation	Liquid in PBS containing 50% glycerol, and 0.02% sodium azide.
Specificity	PACA Polyclonal Antibody detects endogenous levels of protein.
Purification	The antibody was affinity-purified from rabbit antiserum by affinity-chromatography using epitope-specific immunogen.
Storage	-15°C to -25°C/1 year(Do not lower than -25°C)
Concentration	1 mg/ml
MW(observed)	19kD
Modification	Unmodified
Clonality	Polyclonal
Isotype	IgG

Antigen&Target Information

Immunogen	Synthesized peptide derived from part region of human protein. AA range 1-38
Specificity	PACA Polyclonal Antibody detects endogenous levels of protein.
Gene Name	ADCYAP1
Protein Name	Pituitary adenylate cyclase-activating polypeptide (PACAP) [Cleaved into: PACAP-related peptide (PRP-48); Pituitary adenylate cyclase-activating polypeptide 27 (PACAP-27) (PACAP27); Pituitary adenylate cyclase-activating polypeptide 38 (PACAP-38) (PACAP38)]



Database Link

Organism	Gene ID	SwissProt
Human	116	P18509
Mouse		O70176
Rat		P13589

Background

This gene encodes a secreted proprotein that is further processed into multiple mature peptides. These peptides stimulate adenylate cyclase and increase cyclic adenosine monophosphate (cAMP) levels, resulting in the transcriptional activation of target genes. The products of this gene are key mediators of neuroendocrine stress responses. Alternative splicing results in multiple transcript variants. [provided by RefSeq, Feb 2013],

Function

Stimulates adenylate cyclase in pituitary cells.,similarity:Belongs to the glucagon family.,

Cellular Localization

Secreted.

Tissue Expression

Brain,Testis,

Research Areas

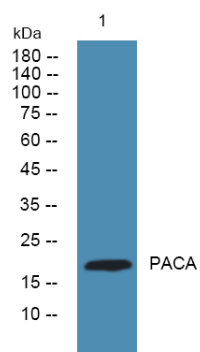
>>cAMP signaling pathway ;
>>Neuroactive ligand-receptor interaction ;
>>Circadian entrainment ;
>>Insulin secretion ;
>>Renin secretion

Signaling Pathway

Organismal Systems >> Endocrine system >> Insulin secretion
Environmental Information Processing >> Signal transduction >> cAMP signaling pathway



Validation Data



Western blot analysis of lysates from K562 cells,
primary antibody was diluted at 1:1000, 4°over night

Contact Information

+886-32876194 www.acebiolab.com Order: order@acebiolab.com Support: service@acebiolab.com
RM. 7, 13F., NO. 268, SEC. 1, GAOTIEZHANQIAN W. RD., ZHONGLI DIST., TAOYUAN CITY 320016, TAIWAN (R.O.C.)

For Research Use Only. Not for Diagnostic Purposes.